

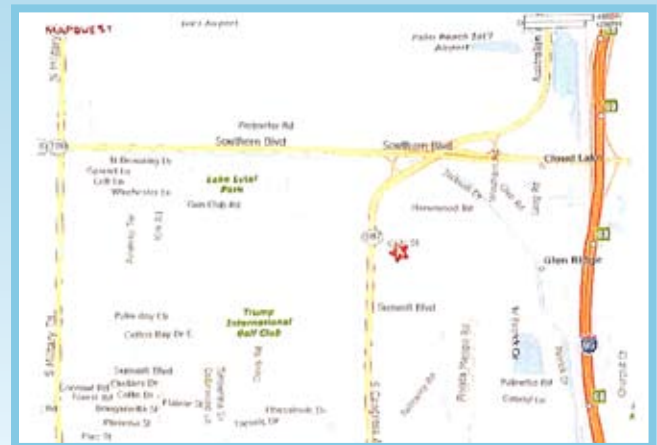
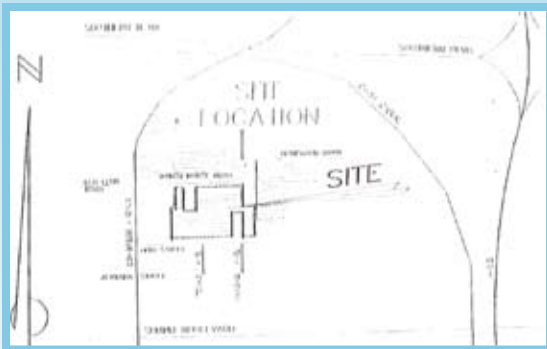


FLAGLER REALTY  
& DEVELOPMENT, INC.

## Industrial Land

WEST PALM BEACH, FL 9.6 +/- - USEABLE ACRES

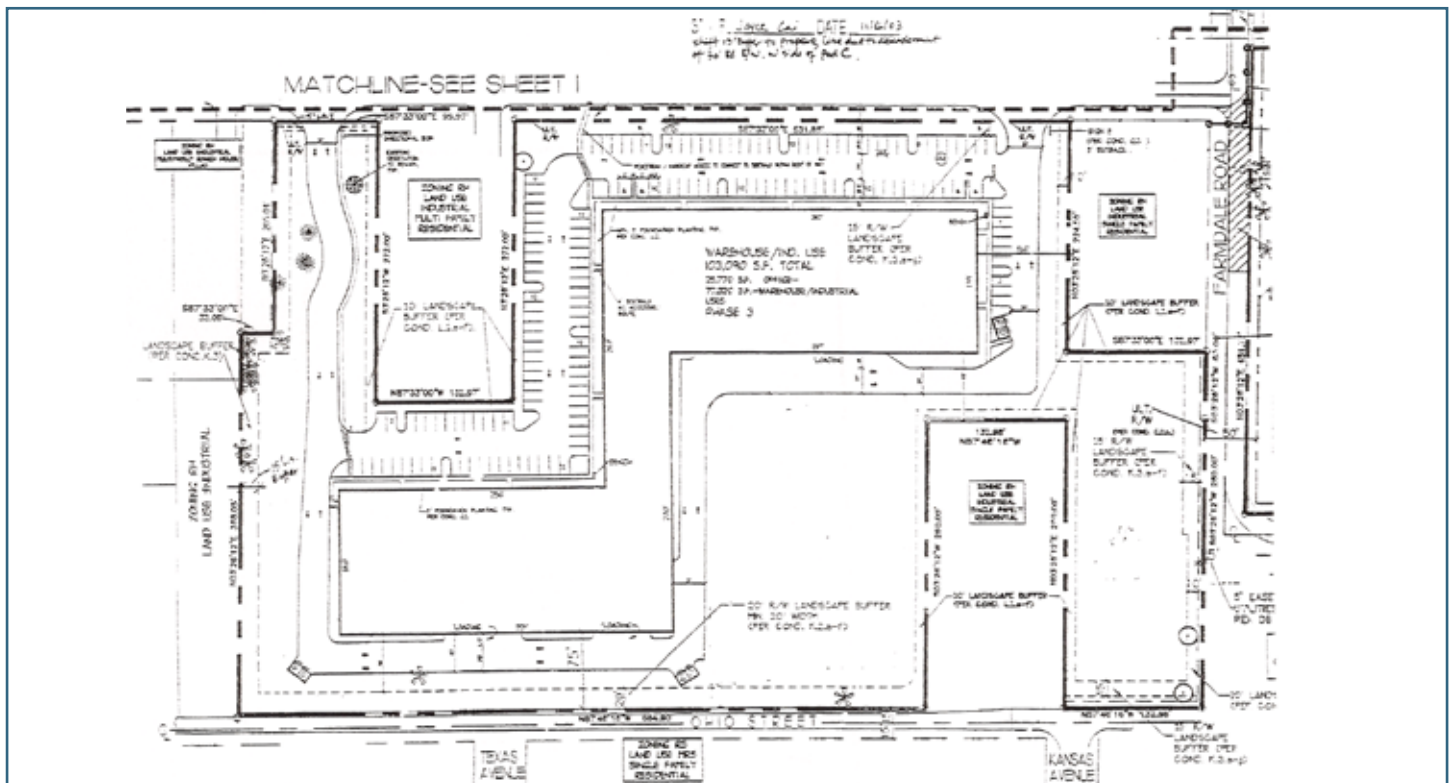
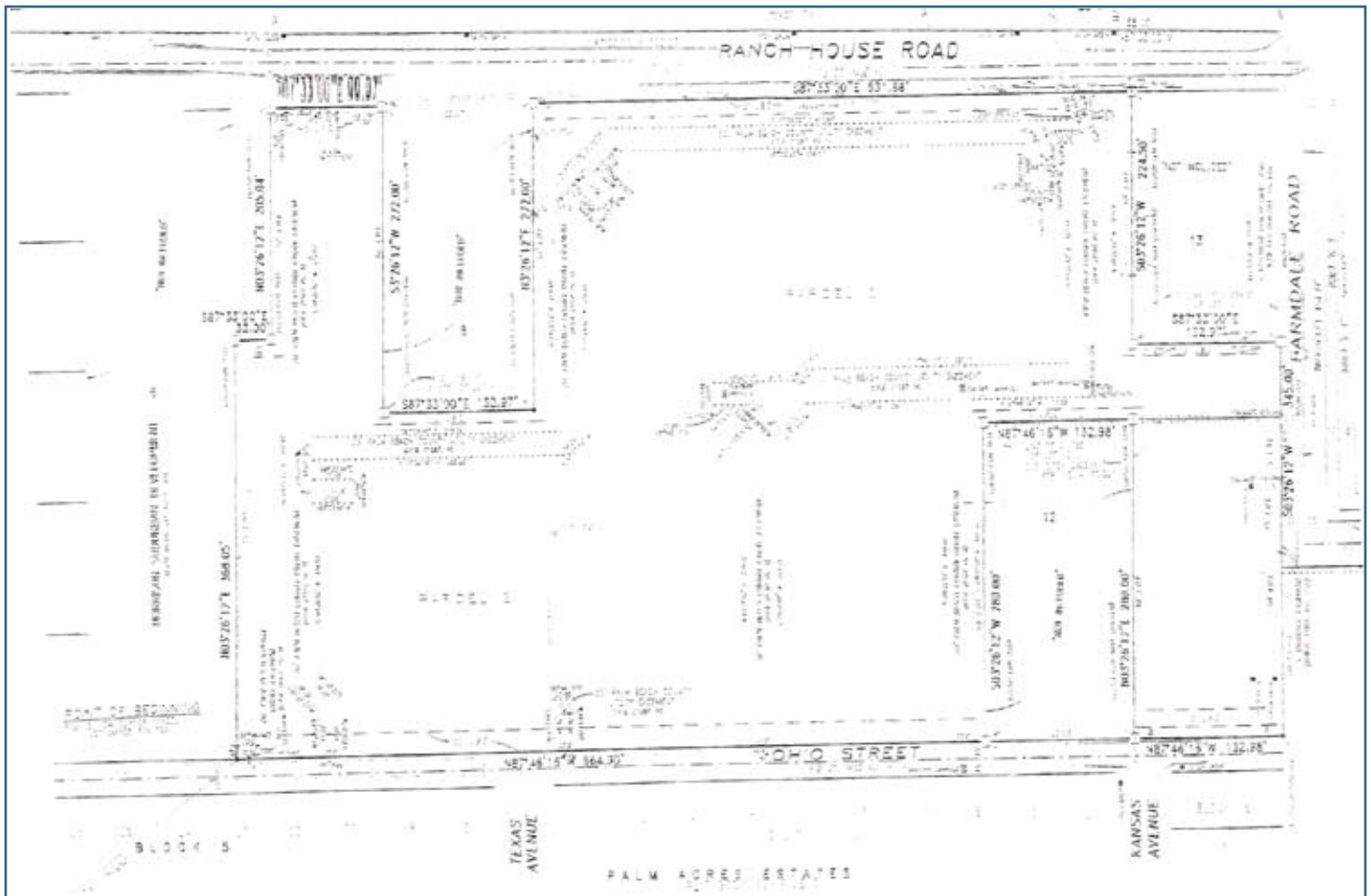
- Location:** Immediately South of Palm Beach International Airport. Minutes from I-95 & the Florida Turnpike. East of Congress Avenue, between Ranch Home Road, to the North, and Ohio Street, to the South
- Size:** 9.6 Useable Acres
- Zoning:** Industrial MUPD. Siteplan approved for 103,000 sq. ft. of office warehouse space
- Improvements:** Water & sewer to the property, on-site retention in place, concurrency vested, Additional land adjoining parcel for expansion available
- Purchase Price:** \$4,500,000



[www.flagler-realty.com](http://www.flagler-realty.com)

Contact Patrick Koenig at 561-655-7200

505 SOUTH FLAGLER DRIVE, SUITE 1010, WEST PALM BEACH, FL 33401



# Industrial Land

WEST PALM BEACH, FL 9.6 +/- USEABLE ACRES